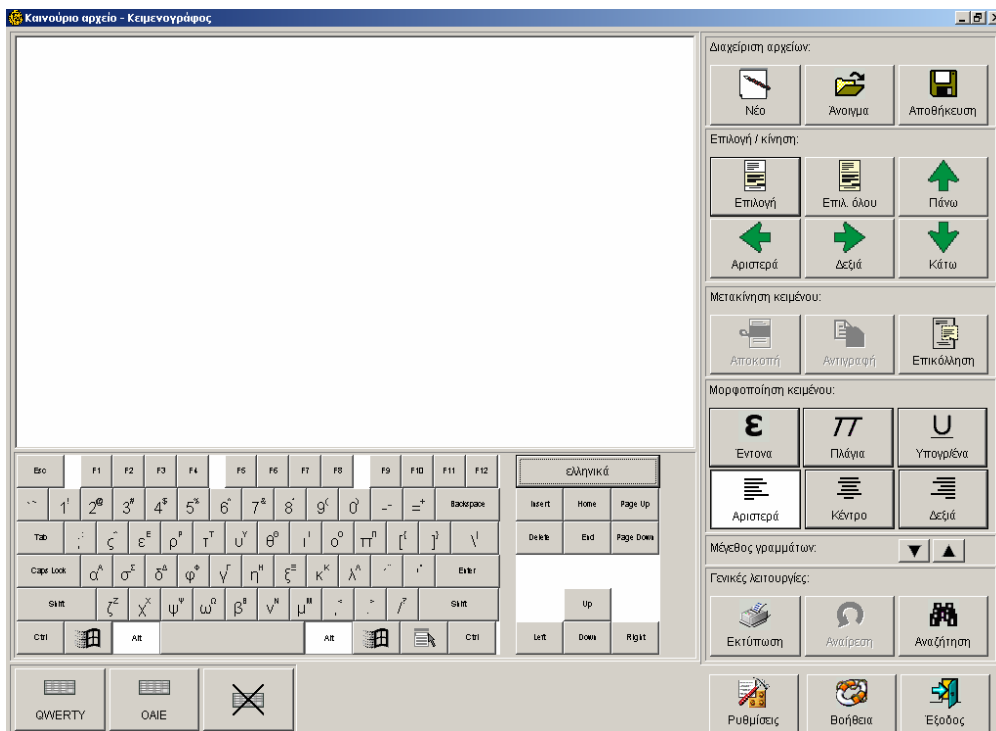




Foundation for Research and Technology - Hellas
Institute of Computer Science (ICS FORTH)
Human-Computer Interaction Laboratory
Centre for Universal Access and Assistive Technologies

FORTHEditor

An Accessible Word Processor for Disabled People



FORTHEditor is a word processing application specifically designed for disabled users with motor impairments of upper limbs and users with learning difficulties.

FORTHEditor has been developed in order to provide the users with an accessible, user-friendly and simple, but still completely functional word processing application, offering support for overcoming specific problems as well as for developing and enhancing writing skills.

FORTHEditor combines typical word processing functionality with special support for text input speed and quality enhancement, and features a user interface including an on-screen keyboard, with support for a variety of input/output devices along with the appropriate interaction techniques.

The functionality of FORTHEditor word processor supports all typical word processing tasks such as: Text input, Text formatting, Text editing, File management and printing.

Additionally FORTHEditor opens and saves files in Rich Text Format, a standard format supported by all commercial word processors. It is also equipped with a full online help subsystem that describes the interface and guides the user in the completion of common work processing tasks.

The user interface of FORTHEditor contains all available functions on the screen, which makes interaction easier and reduces the need of learning and remembering complex procedures or command sequences by the user. It is characterised by a clear separation between the 'text-input' and 'function' areas, and by the grouping of function buttons.

Two layouts for the on-screen keyboard, with different arrangements of characters, are also provided for the Greek and English languages. A typical QWERTY keyboard and an alternative keyboard based on key grouping layout have been included to reduce the number of actions required for text input in combination with the input device selection and the scanning interaction technique.

FORTHEditor supports a variety of input devices, including conventional and special keyboards, mouse, trackball, mouse emulators and binary switches. The use of binary switches in combination with interface scanning is the most suitable for users with severe movement restrictions. When scanning is activated the user is allowed to access the totality of the system functionality by operating a binary switch to move the highlighter throughout the interface.

FORTHEditor also provides acoustic, as well as visual, feedback of function selection and it can be customised by the user. Customisable characteristics include layout selection of the on-screen keyboard, appearance of application fonts, activation/deactivation of FORTHscanning, and activation / deactivation of acoustic feedback.

In order to use FORTHEditor you will require to operate on a PC with Windows95 or later version and approximately 20MB free space on your hard disk.

For further information you may contact us:

Foundation for Research and Technology-Hellas (FORTH)
Institute of Computer Science (ICS)
Human-Computer Interaction Laboratory
and Centre for Universal Access and Assistive Technologies
Heraklion, Crete, GR-70013 Greece

Email: at-hci@ics.forth.gr
URL: <http://www.ics.forth.gr/hci/>

Tel: +30-2810-391741
Fax: +30-2810-391740